



Automation Products

Fluid Controls & Systems brings a range of Automation Products to suit applications across industries. These products are the result of active collaboration with end user groups, and have been proven to deliver results in widely varying environmental conditions. They can complement your other world class equipment in terms of quality and reliability. Give your application the best you can - with these automation products.

Data Loggers

UNISCAN 3200

- 8-32 Channel Universal Input Scanner/ Data Logger
- RTD/ mA/ Thermocouple/ Volt
- Common Alarm Relay Output
- Serial and Printer Output
- Modbus RTU Protocol
- Rt232/ RS485
- 16 Point Scaling & Engineering Unit Programmable
- Real-time Data Logging



FALCON-1600DL

- 4-16 Channels
- Accepts Analog Input mA/ RTD/ Volt/ Thermocouple in steps of 4 Channels
- Optimal Control Output for each Channel, indication on front
- User Configurable Span for mA/ Volt inputs
- Data Logging and Printing
- Serial Communication on RS232 port Modbus RTU Protocol

DLC-001M

- Simple Channel Data Logger
- 4 ½ Digit, ½ inch Display
- Signal Retransmission
- Settable Hysteresis for Relays
- User Configurable Span
- Serial Communication on RS485/ RS232 with Modbus RTU
- Real-time Data logging



Analog-Digital I/O Modules

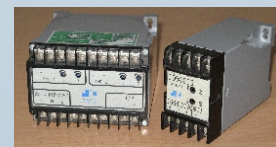
FALCON-1600



- 4-16 Channels
- Accepts Analog Input mA/ RTD/ Volt/ Thermocouple in steps of 4 Channels
- Control Output for each Channel, indication on front
- Serial Communication on RS485 port MODBUS Protocol
- Ideal for SCADA applications

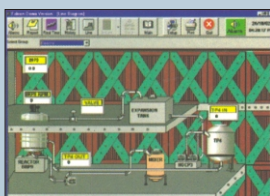
Sensors/ Transmitters

- Temperature Sensors, RTD/ Thermocouples
- Humidity Transmitters
- Pressure Transmitters
- Signal Convertors/ Isolators



Recording Software

FALCON Smart Process Recorder



- Designed for 21CFR Part 11 Compliance
- 128 Tag Recording Software with standard facilities like Reporting, Graph, History, Alarm Records & Mimics
- Additional 8 Auto Reports in Microsoft Excel per day
- Daily e-mail of Auto Reports
- Alarm Trigger Facility for each Tag
- Facility to Add Trigger for Recording on each Tag
- Supervisor and Manager Passwords to Access Software
- Field Validation of Software

Digital Process Indicator

DPC 412

- Single Channel Analog Input
- 1" or 1/2" Bright LED Display
- HI & LO Alarm Relay Output
- RS485
- 24 V DC, 100 mA available
- mA or Voltage Input
- User Configurable Span
- Re-transmission of Input Signal
- Modbus RTU Protocol



Serial Converter

CSCAN 485 & CSCAN 485 DC

- 230 V AC/ 110 V AC/ 24 V DC
- Optical Isolation between RS232 and RS485 Ports
- LED Indications for Communication and Power ON
- Auto Baud selection from 300 bps to 115.2 kbps
- Bidirectional Communication
- DIN Rail Mounting ABS Moulded Cabinet



Serial Repeater CSCAN RPT 485

- 230 V AC/ 110 V AC/ 24 V DC
- Optical Isolation between Input and Output Ports
- LED Indications for Communication and Power ON
- Auto Baud Selection from 300 bps to 115.2 kbps
- Bidirectional Communication
- DIN Rail Mounting ABS Moulded Cabinet



Flow Totalisers

FIT 393M (96x96)

- 4-20 mA or Square Root Input
- Field Programmable Span & Zero
- Decimal Point Programmable
- Re-transmission of Input Signal
- Printer Port available
- RS232/RS485
- 5 Digit Flow & 8 Digit Totaliser
- Setting for Flow and Totaliser
- 24 V DC, 100 mA available
- Real-time Data Logging
- Modbus RTU Protocol



Mass Flow Computer MFM 393

- Flow, Line Pressure & Temperature 4-20 mA Inputs
- Field Programmable Span Setting for Flow and Totaliser
- Modbus RTU Protocol
- RS485 Port
- Mass Flow Computed 4-20 mA Output
- 5 Digit Flow & 8 Digit Totaliser
- Decimal Point Programmable
- 24 V DC, 100 mA available for Transmitter



We also offer the following:

- Soft Starters
- Variable Speed Drives (VFD)
- Switch Mode Power Supplies (SMPS)
- Pressure Switches
- LCD Touchscreen Displays
- PLC and SCADA Software
- Complete Application Solutions
- Control Panels

For more information on any or all of these products, or to speak to our technical representatives regarding your specific application, please call or write to us at the address given below.